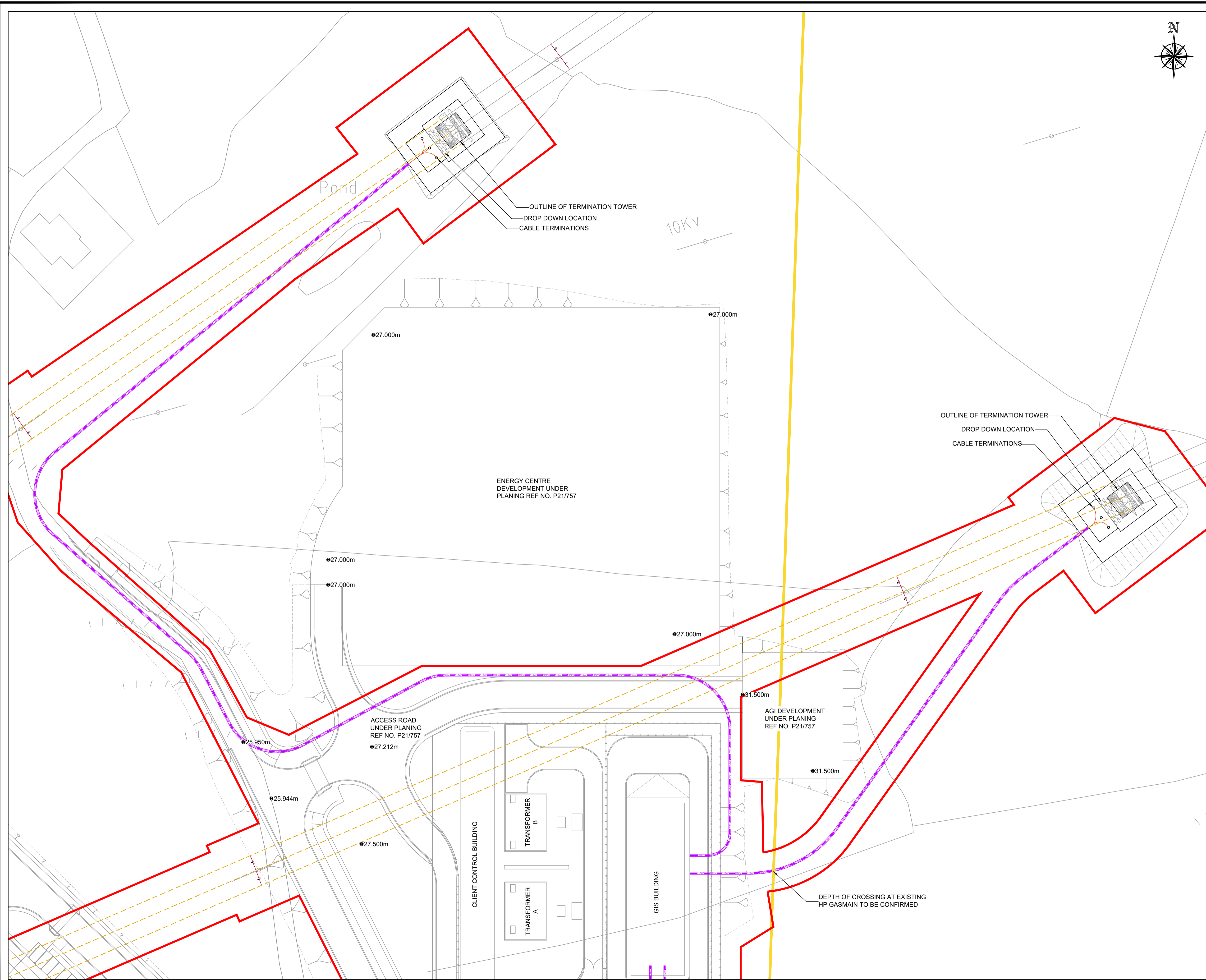
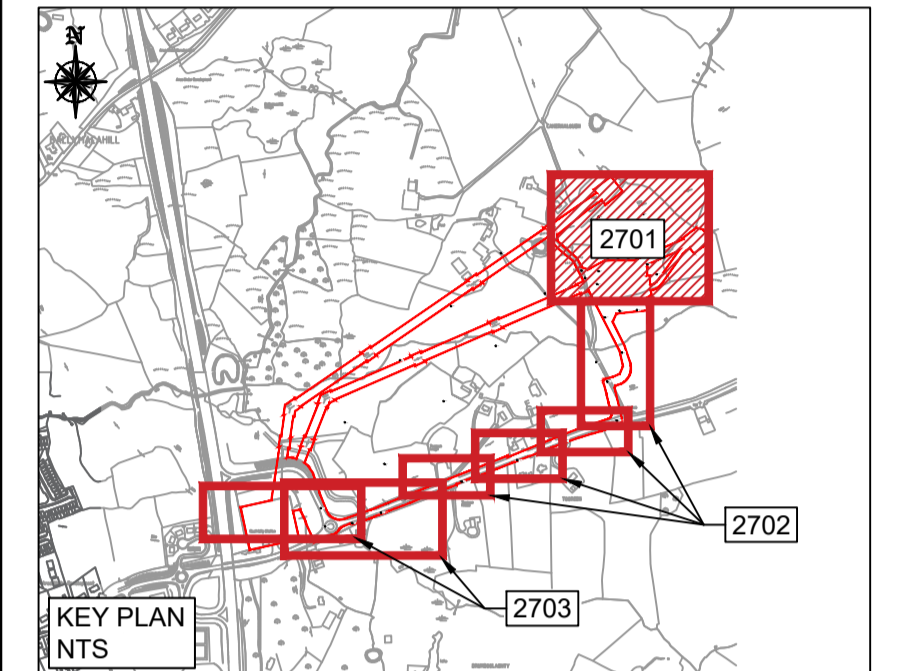


ART DATA CENTRES



LEGEND:

SITE BOUNDARY	
EXISTING OH LINES TO BE REMOVED	
PROPOSED 110kV, 2x125mm ² SDR17.6 AND 3x160mm ² SDR21 HDPE DOUBLE CIRCUIT	
PROPOSED JOINT BAY LOCATION	
PROPOSED TELECOM DUCT	
PROPOSED LINK BOX	
PROPOSED TELECOM CHAMBER	
EXISTING HP GASMAIN	

P01	FOR PLANNING	PS	RG	03/06/22
Rev	Description	Drawn	Checked	Date

Clifton Scannell Emerson Associates Limited
Consulting Engineers,
3rd Floor The Highline,
Bakers Point, Pottery Road,
Dun Laoghaire, Co. Dublin,
Ireland, A96 KW29

T: +353 1 288 5006
F: +353 1 283 3466
E: info@csea.ie
W: www.csea.ie

Client: ART DATA CENTRES
ART DATA CENTRES ENNIS
Project: CAMPUS - 110KV GIS SUBSTATION
PROPOSED 110 KV GRID CONNECTION
SHEET 01 OF 03

Drawn By: PS Checked By: RG Date: JUN 2022

Project Code: 20_110A - CSE - GEN - XX - DR - C - 2701

S2	PLANNING	Scale @ A1 1:500
Status Code	Suitability Description	
P01	PLANNING	20_110A
Revision	Project Status	CSEA Job No.